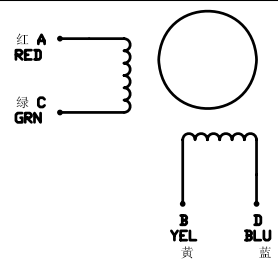


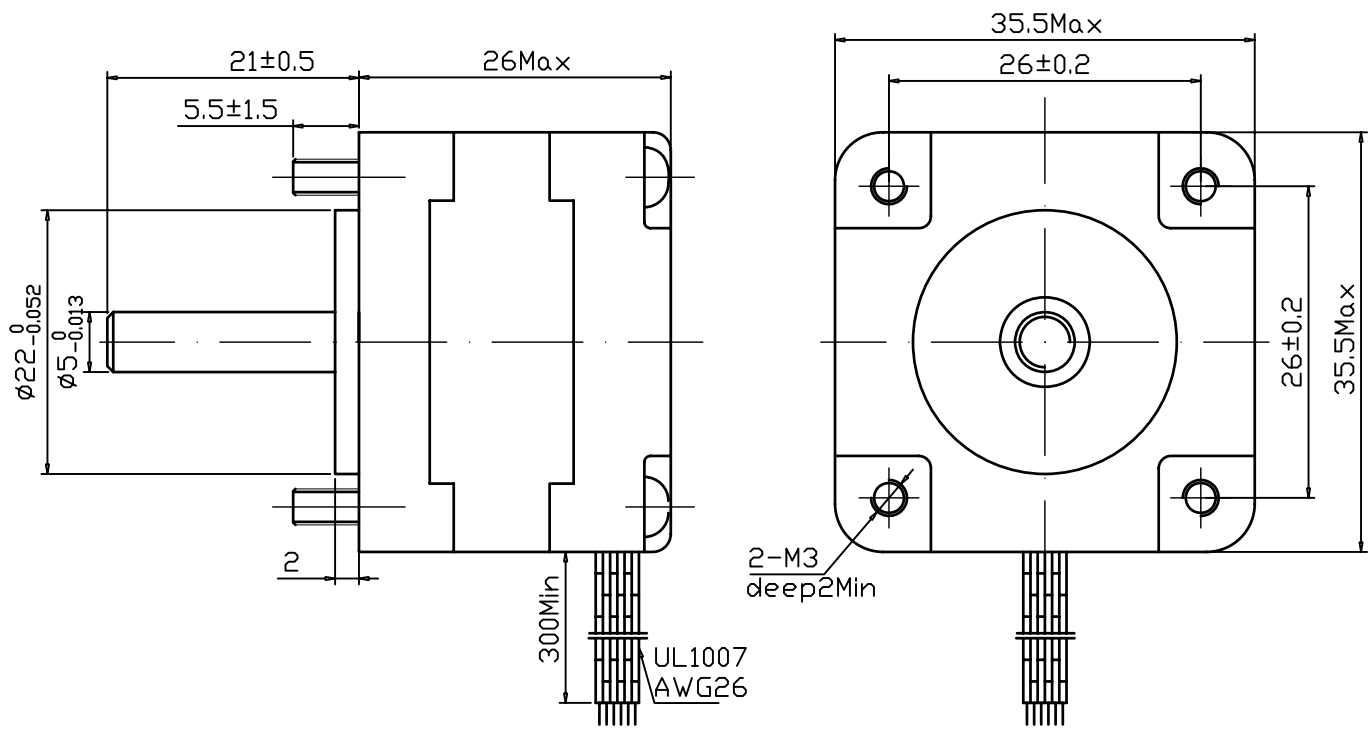
# STEPPING MOTORS TYPE 35BH26-040A-21A

COMMON RATINGS		SPECIFICATIONS		Wiring Diagram
STEP ANGLE	1.8°±5%	VOLTAGE	14V	
PHASES	2	CURRENT	0.4A	
INSULATION RESISTANCE	100MΩ(500V DC)	INDUCTANCE	16±20% mH	
CLASS OF INSULATION	B级	RESISTANCE	35±10%Ω	
WEIGHT	0.17kg	HOLDING TORQUE	0.7kg.cm	



## DIMENSION

units:mm



DJ. 35BH26. 040A. 21A